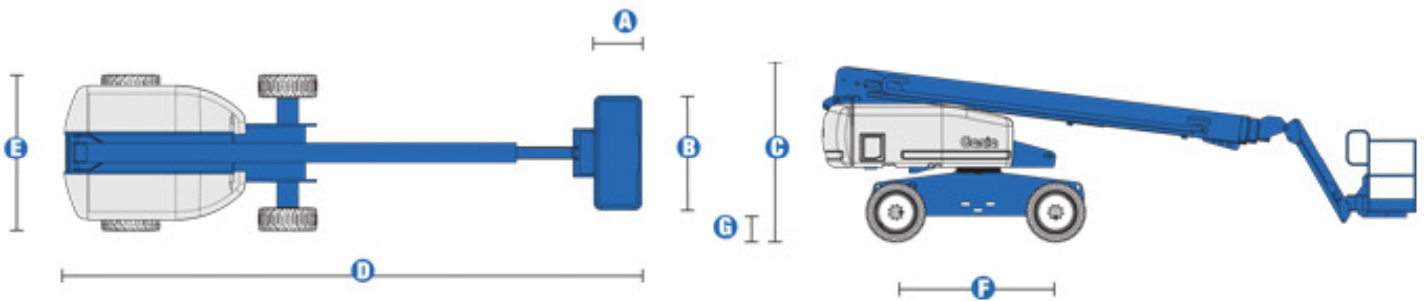
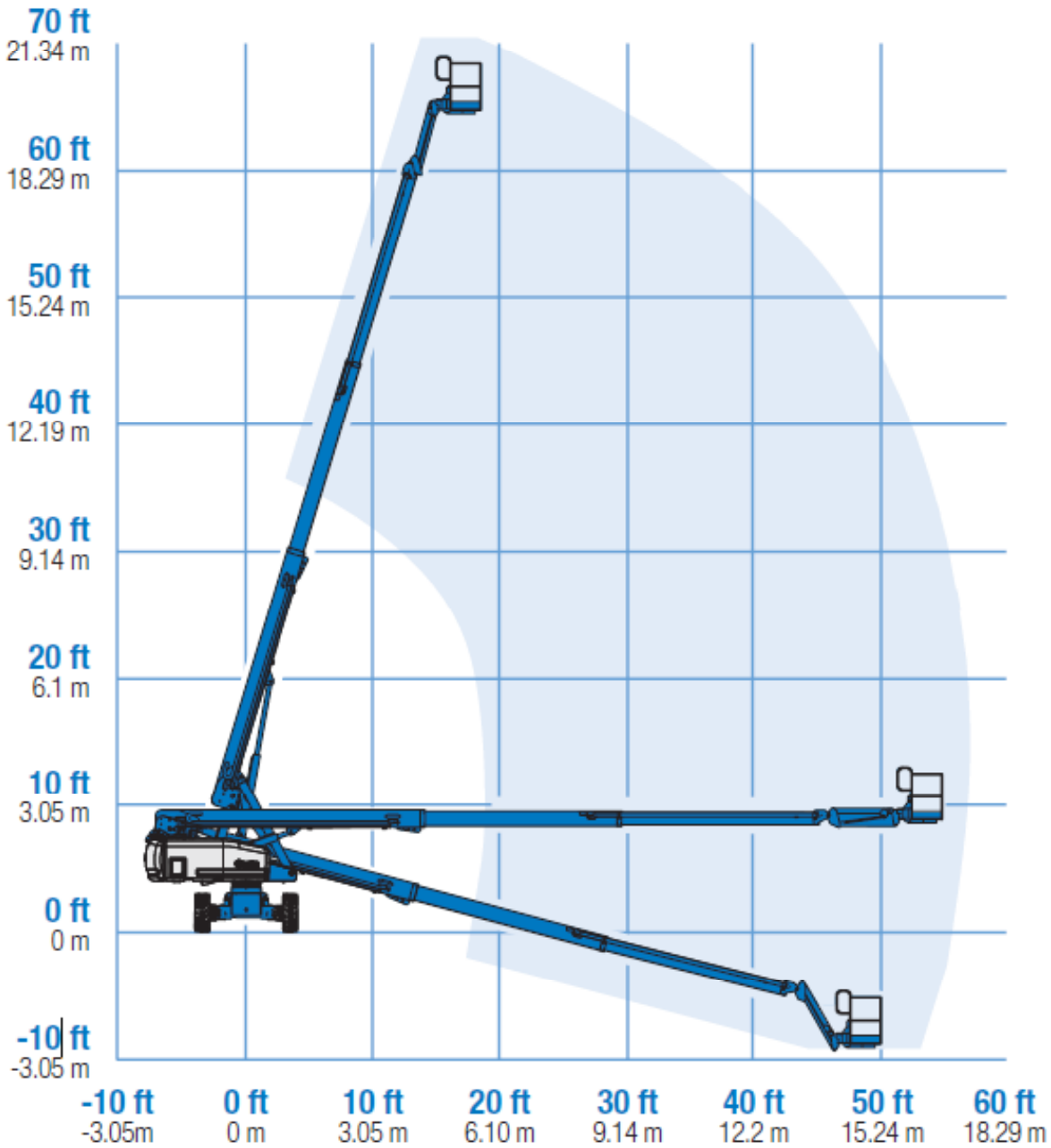


RANGE OF MOTION S™-65



A Platform length	0.91 m	3 ft
B Platform width	2.44 m	8 ft
C Height - stowed	2.72 m	8 ft 11 in
D Length - stowed	9.50 m	31 ft 2 in
Length - transport (jib tucked under)	7.60 m	25 ft
E Width	2.49 m	8 ft 2 in
F Wheelbase	2.50 m	8 ft 2.5 in
G Ground clearance - center	0.37 m	1 ft 2.5 in